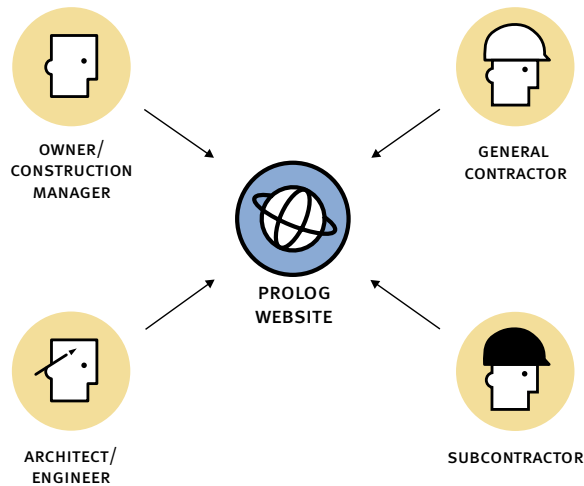


Internet Collaboration for Project Teams

Prolog® WebSite, from Meridian Systems®, complements Prolog Manager as a web-based collaboration application designed for the extended project team, ensuring all participants, including the owner, architect, construction manager, general contractor, subcontractor, and suppliers, are well coordinated throughout the construction process.

Prolog WebSite connects project team members to one another and to the images, documents, and database information they need, all in real time. Project teams eliminate communication problems with Prolog WebSite's robust workflow process and by sharing design drawings, jobsite photos, project schedules and more than 400 reports. All this functionality is easily accessed through a browser from any computer with an Internet connection.

Designed for both document and data management, Prolog WebSite offers an intuitive, easy-to-use interface for all users. For performance reliability and scalability, Prolog WebSite runs on the Microsoft® SQL Server™ database.



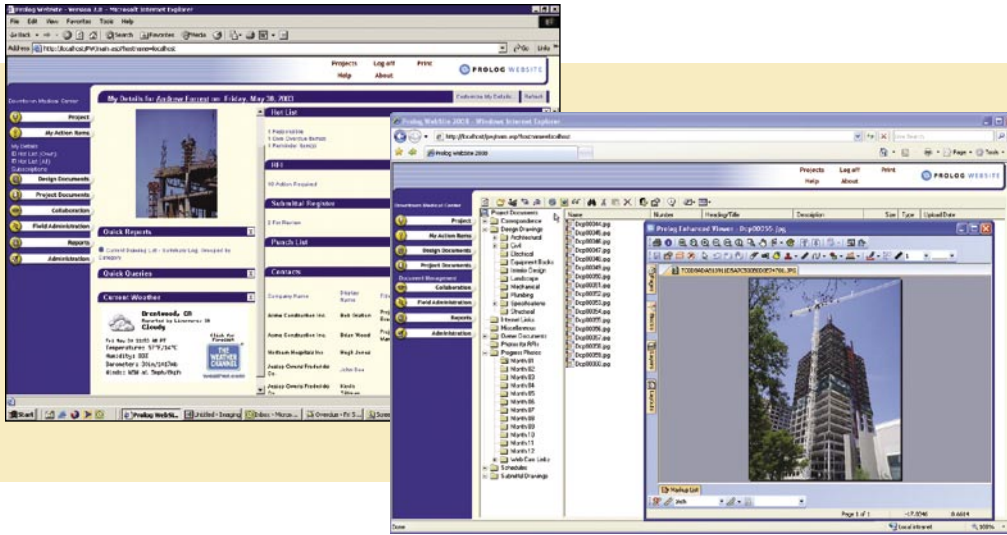
Collaboration for the Project Team

Use Prolog WebSite to collaborate with your project team, managing both project data and documents.

Benefits

- › Reduce project schedules by collaborating more effectively with project participants
- › Improve document control by streamlining the review process, easily tracking revisions and storing master files
- › Reduce overnight shipping costs by using powerful document management features for viewing and redlining files
- › Access complete and accurate project information and reports from anywhere in the world
- › Standardize company business practices using powerful web-based collaboration
- › Increase efficiency by automatically integrating with Prolog Manager

Quickly view a snapshot of your project including current weather, your favorite reports and active hotlist, RFI, submittal and punchlist records.



Track and mark up your digital images, drawings and other files in Prolog WebSite.

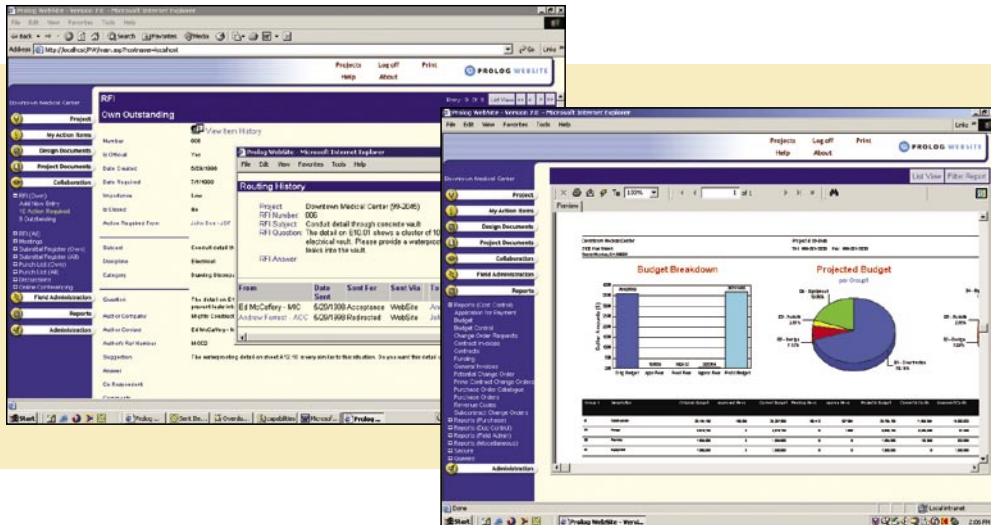
MY DETAILS - MY PERSONAL DESKTOP

Feature	Advantage
Role-based Information	Save time with alerts of RFIs, submittals and punch list items requiring your action
Subscriptions To Project Information	Save time by letting Prolog Manager inform you of changes to the database
Hotlist	Proactively manage your project with a personalized action list
Current Weather	Predict delays and understand field conditions remotely
Quick Reports	Save time by creating links to your favorite reports
Quick Queries	Find the project data you need quickly with a saved query
Project Contacts	Find project team contact phone numbers quickly within Prolog WebSite

DOCUMENT MANAGEMENT

Feature	Advantage
Document Design and Review Process	Efficiently manage documents with a streamlined design and review process that prevents duplication or rework from miscommunication
File Check-In/Check-Out	Leverage historical audit trails that track who changed what, and when
Version Control	Easily keep track of all versions of your documents
File Upload Wizard	Upload and organize your project files in an intuitive folder structure
Document Viewer	Use Rasterex Viewer for native redline and mark-up on a file. Track redlining review process, set user profiles, manage layers and control redline colors for enhanced document tracking
Document Security	Define user-level security permissions on all files and folders
File Management	Easily manage project files in streamlined folder structure, like Windows Explorer
Drawings and Specifications	Exert greater quality control through electronic control of drawings
Permissions Model with Inheritance	Save time managing document security at the folder and file levels

Cut your RFI response time significantly by managing your workflow process online using Prolog WebSite.



Print more than 400+ standard reports including this Budget Analysis Report, or your own custom reports.

COLLABORATION

Feature	Advantage
Meeting Minutes	Improve decision making by allowing entry and access to meeting minutes from anywhere
Requests for Information	Reduce response times and improve project schedules by managing your workflow process online. Enhanced collaboration by utilizing distribution lists in the RFI document
Submittal Register	Proactively list all required submittals
Submittal Packages	Maintain a paper trail on submittals and reduce response times

FIELD ADMINISTRATION

Feature	Advantage
Daily Details	Maintain tracking information for historical record
Daily Work	Save time by allowing trade contractors to enter their own daily work journal entries
Reports	Access daily construction, event, labor, material inventory and many other reports from your browser
Punch List	Reduce punch list resolution time

System Requirements

Processor: 600-megahertz (MHz) Pentium III-compatible or faster processor; 1-gigahertz (GHz) or faster processor recommended

Operating System: Windows XP with Service Pack 2 or later; Microsoft Windows 2000 Professional with SP4; Microsoft Windows 2000 Server with Service Pack 4 or later; Windows Server 2003 Standard, Enterprise, or Datacenter editions with Service Pack 1 or later (32 bit, English versions only); Vista Home Basic and above

Memory: 192 megabytes (MB) of RAM or more; 512 megabytes (MB) or more recommended

Disk Space: Other disk space requirements depend on the components selected during a Custom setup. For more information on server capacity needs, please refer to the section on Advanced Hosting and Server Storage Capacity Guidelines section on Meridian's SupportLink site.

Display: 800 x 600, 256 colors (Minimum); 1024 x 768 high color, 32-bit (Recommended)

Required Client Software: Minimum: Microsoft Internet Explorer 6.0 SP1 or later

Note: Software requirements may have changed; see product installation guide for detailed requirements.